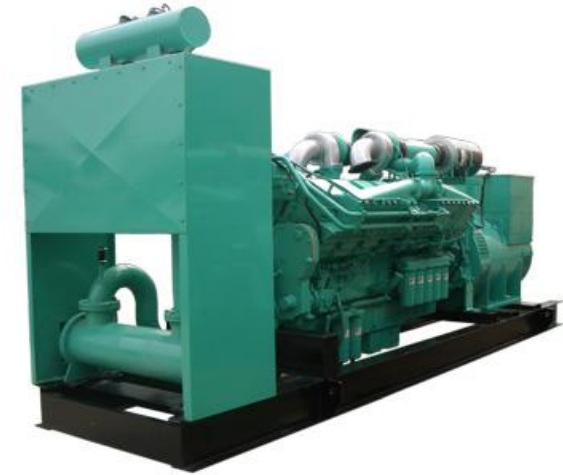


## Datasheet

### **HCM750 Cummins Diesel Power Generator (KTAA19-G6A)**

**560kW-700kVA  
600kW-750kVA  
60Hz**



#### Equipment

Engine and alternator mounted on same frame steel skid.  
Build in damper for anti-vibration.  
Compact design, easy to operate and maintain.  
Cummins brand engine.  
Top brand AC alternator.  
Full range protections, alarms with auto shutdown features.  
Comply with ISO8628 national standard and ISO9001 quality standard. Specially designed horizontal/vertical, engine driven/electrical radiator. Industrial, Residential silencers.  
Catalytic converters.  
Heat exchangers.  
Special spark arrestor silencers.  
Standard set for "CE" certification.  
Sound & Weatherproof canopy optional.  
Spring, seismic anti-vibration mounts.  
Advanced facility for FAT.

Genset Model	Prime Power (kW/kVA)	Standby Power (kW/kVA)	Fuel Consumption (l/h)	Diesel Engine Model	Bore × Stroke (mm)	Qua. Of Cylinder	Dimension L × W × H (mm)	Weight (kg)	Noise Level (dBA)
HCM28	20/25	22/27.5	6	4B3.9-G	102×120	4L	1600×830×1300	950	95
HCM33	24/30	26/32.5	7.2	4B3.9-G	102×120	4L	1600×830×1300	950	95
HCM45	32/40	36/45	9.6	4BT3.9-G	102×120	4L	1800×830×1300	1000	95
HCM50	36/45	40/50	12	4BT3.9-G	102×120	4L	1800×830×1300	1000	95
HCM69	50/62.5	55/69	14	4BTA3.9-G2	102×120	4L	1850×830×1430	1250	95
HCM75	56/70	60/75	16	4BTA3.9-G2	102×120	4L	1950×830×1430	1300	95
HCM96	70/87.5	77/96	19	6BT5.9-G2	102×120	6L	2150×830×1430	1350	95
HCM110	80/100	88/110	23	6BT5.9-G2	102×120	6L	2150×830×1430	1350	95
HCM125	90/112.5	100/125	26	6BT5.9-G2	102×120	6L	2150×830×1430	1400	95
HCM138	100/125	110/137.5	30	6BTA5.9-G2	102×120	6L	2350×950×1530	1750	95
HCM165	120/150	132/165	36	6BTAA5.9-G2	102×120	6L	2350×950×1530	1800	95
HCM193	140/175	154/192.5	40	6CTA8.3-G2	114×135	6L	2650×950×1600	1900	95
HCM220	160/200	176/220	44	6CTA8.3-G2	114×135	6L	2650×950×1600	2000	95
HCM250	180/225	200/250	48	6CTAA8.3-G2	114×135	6L	2650×950×1600	2200	95
HCM275	200/250	220/275	54	6LTAA8.9-G2	114×144	6L	2800×980×1530	2500	102
HCM300	220/275	240/300	60	6LTAA8.9-G2	114×144	6L	2800×980×1530	2500	102
HCM344	250/312.5	275/344	70	NTA855-G1	140×152	6L	2850×1000×1600	2900	103
HCM388	280/350	310/387.5	76	NTA855-G1B	140×152	6L	3000×1000×1600	3100	103
HCM413	300/375	330/412.5	83	NTA855-G3	140×152	6L	3000×1120×1600	3250	103
HCM450	320/400	360/450	90	NTA855-G3	140×152	6L	3000×1120×1600	3250	103

Genset Model	Prime Power (kW/kVA)	Standby Power (kW/kVA)	Fuel Consumption (l/h)	Diesel Engine Model	Bore × Stroke (mm)	Qua. Of Cylinder	Dimension L × W × H (mm)	Weight (kg)	Noise Level (dBA)
HCM500	360/450	400/500	97	KTA19-G2	159×159	6L	3400×1200×1900	4000	102
HCM550	400/500	440/550	107	KTA19-G3	159×159	6L	3400×1220×1900	4300	102
HCM625	460/575	500/625	118	KTA19-G4	159×159	6L	3400×1220×1900	4800	103
HCM700	500/625	550/687.5	135	KTAA19-G5	159×159	6L	3800×1500×2000	5000	103
HCM750	560/700	600/750	150	KTAA19-G6A	159×159	6L	4000×1500×2000	5400	103
HCM825	600/750	660/825	167	KT38-G	159×159	12V	4600×1650×2400	7400	105
HCM938	680/850	750/937.5	185	KTA38-G2	159×159	12V	4600×1650×2400	7650	105
HCM1000	728/910	800/1000	194	KTA38-G2	159×159	12V	4600×1650×2400	7950	105
HCM1125	800/1000	900/1125	209	KTA38-G2A	159×159	12V	4600×1650×2400	8150	105
HCM1150	840/1050	920/1150	219	KTA38-G4	159×159	12V	4800×1800×2400	8950	105
HCM1250	928/1160	1020/1275	245	KTA38-G4	159×159	12V	4800×1800×2400	9250	105
HCM1600	1120/1400	1280/1600	282	KTA50-G3	159×159	16V	5200×1930×2400	10500	105
HCM1875	1280/1600	1500/1875	330	KTA50-G9	159×159	16V	5280×2000×2400	11500	105

Guangdong Honny Power-Tech Co., Ltd  
 Tel: 0086-769-2278 0359  
 Fax: 0086-769-2278 0357  
 Email: [sales@honnypower.com](mailto:sales@honnypower.com)  
 Website: [www.honnypower.com](http://www.honnypower.com)  
 Address: No.2, Industry North Road, Songshan Lake, Dongguan, China

